



Gateway to  
the history  
of Shropshire  
and Telford

## Sources for WESTON UNDER REDCASTLE (Hawkestone)

This guide gives a brief introduction to the variety of sources available for the parish of **Weston under Redcastle** at Shropshire Archives. This was originally a chapel of ease attached to Hawkestone Hall within the parish of Hodnet so missing ancestors may be found in the Hodnet registers.

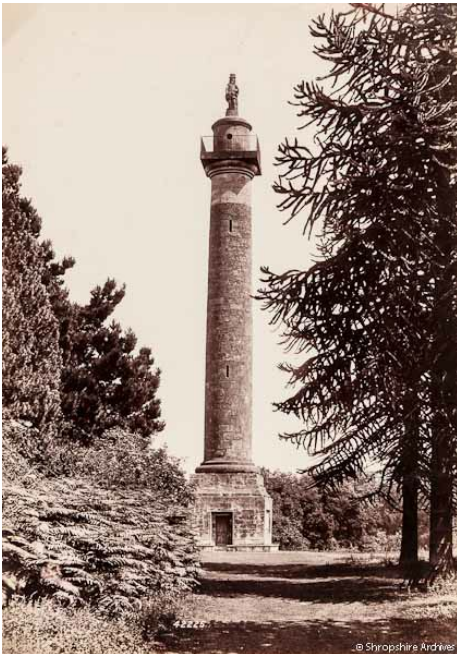
### Printed books:

**General works** - These may also be available at library

- Eyton, *Antiquities of Shropshire*
- *Transactions of the Shropshire Archaeological Society*
- *Shropshire Magazine*
- Trade Directories which give a history of the town, main occupants and businesses, 1828-1941
- Victoria County History of Shropshire
- Parish Packs
- Monumental Inscriptions

**Small selection of more specific books** (search [www.shropshirearchives.org.uk](http://www.shropshirearchives.org.uk) for a more comprehensive list)

- **q BH64** *The Hills of Hawkestone and Attingham: the rise, shine and decline of a Shropshire family* – Joanna Hill
- **C06 v.f.** *A catalogue of county house views and architectural drawings (including Hawkestone Park)* – Henry Potts



*This obelisk stands within the grounds of Hawkestone Park. It is built out of Grinshill stone and is 112 feet high. It was erected by Sir Rowland Hill in 1795 in memory of the first Sir Rowland Hill. Inside the obelisk there is a spiral staircase consisting of 152 steps.*

PH/H/12/3/12

## Sources on microfiche or film:

### Parish and non-conformist church registers

	Baptisms	Marriages / Banns	Burials
Parish church	1565-1920	1565-1726 & 1905-1988	1565-1993
Methodist registers – see Methodist Circuit records (Reader's ticket needed)			

Up to 1900, registers are on [www.findmypast.co.uk](http://www.findmypast.co.uk)

### Census returns

1841, 1851(indexed), 1861, 1871, 1881 (searchable database on CDROM), 1891 and 1901.  
Census returns for England and Wales 1841-1911 can be looked at on the Ancestry website on the computers

### Maps

Ordnance Survey maps 25" to the mile and 6 "to the mile, c1880, c1901  
(OS reference: old series XXII.1 new series SJ 5529)  
Land Valuation maps 1910  
Tithe map, c 1840 (see Hodnet: Weston under Redcastle)

### Newspapers

*Shrewsbury Chronicle*, 1772 onwards  
*Shropshire Star*, 1964 onwards

## Archives:

To see these sources you need a Shropshire Archives Reader's Ticket.  
(search [www.shropshirearchives.org.uk](http://www.shropshirearchives.org.uk) for a more comprehensive list)

**P301 Weston under Redcastle Parish records see also P132 Hodnet Parish Records**

### School Records

No School records

### Records of Local Authorities and Institutions

PL14 Wem and PL7 Market Drayton Union Workhouse records  
Q Quarter Sessions  
DA27 Wem Rural District Council records *held offsite, please request in advance*

### Estate records

731 Bygott Solicitor's (Hill of Hawkestone) records including:  
731/5/3/65 – Particulars of Hawkestone Estate property of Viscount Hill (with plans) 1888  
322 Corbet of Acton Reynald including:  
322/6/5 – Rent roll: Estates of Andrew Corbett including Hawkstone/Weston 1720  
322/6/8 – Rent Roll Weston Estate 1762  
See [www.nationalarchives.gov.uk/mdr](http://www.nationalarchives.gov.uk/mdr) for manorial records (under Red Castle)

### Other Records

Wills for Shropshire post 1858 (pre 1858 – see Lichfield Diocesan Record Office)  
Photographs and Postcards  
And much much more!

## Shropshire Archives

Castle Gates, Shrewsbury SY1 2AQ,  
tel 0345 678 9096

e-mail: [archives@shropshire.gov.uk](mailto:archives@shropshire.gov.uk) website: [www.shropshirearchives.org.uk](http://www.shropshirearchives.org.uk)

